



The privately owned Tosto Group manufacturing network specialises in the fabrication of complex steel equipment requiring state-of-the-facilities, high-precision machining, work in clean conditions and advanced welding technologies.

Manufacturing activities are spread across Walter Tosto S.p.A. [IT] Belleli Energy CPE [IT] and Walter Tosto WTB [RO]



Employees:
1.250+



Assets:
400.000.000 €



Investments:
75.000.000 € in 5 years



Turnover:
~200.000.000 €



Order Portfolio Jun 2023:
600.000.000 €



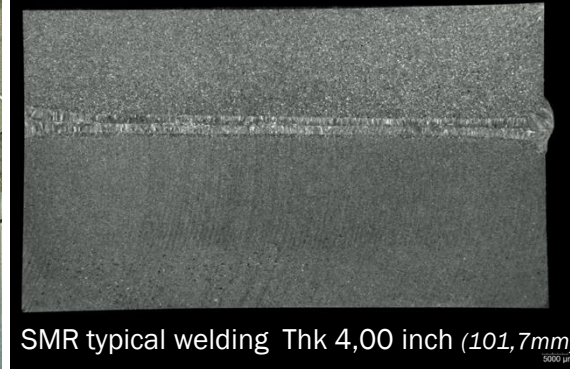
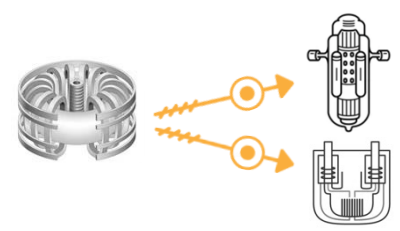
Equity and Reserves:
150.000.000 €



Electron Beam Machine



Utilize electron beam to elevate manufacturing to the next level and make series feasible

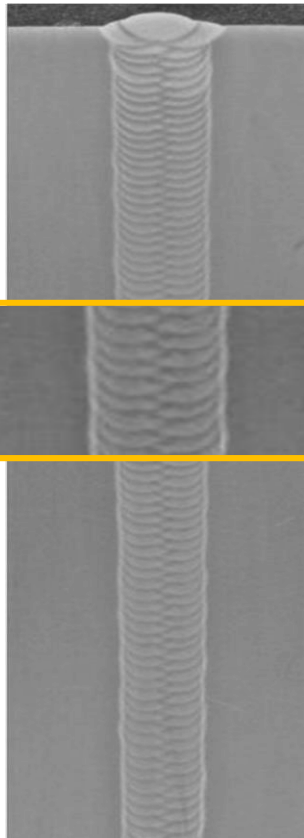


- ▶ Internal dimensions of welding Vacuum Chamber: 6.8 x 6.8 x 14 m.
- ▶ 5-axis robotic system capable of welding with a single pass: Stainless Steel, Copper, Chrome Vanadium, Titanium, etc., with a thickness equivalent to 120mm of stainless steel.
- ▶ Numeric controllers capable of guiding the robotic arm with extreme mechanical precision (tracking acc.: 0.05mm).
- ▶ Ø4m trolley system with a rotary device.

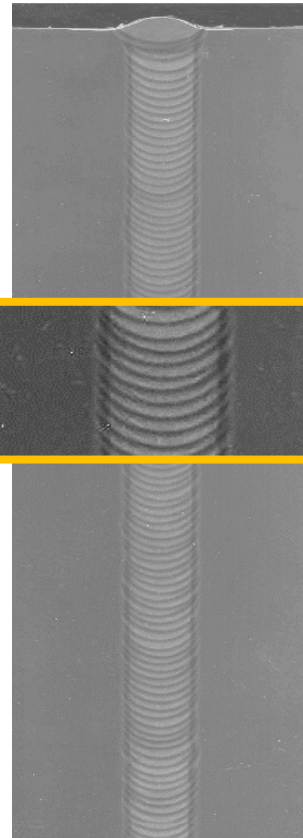
Bring state of the art technology to next level, improve quality and reduce production time



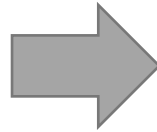
SAW TANDEM STANDARD
NARROW GAP SOLUTION



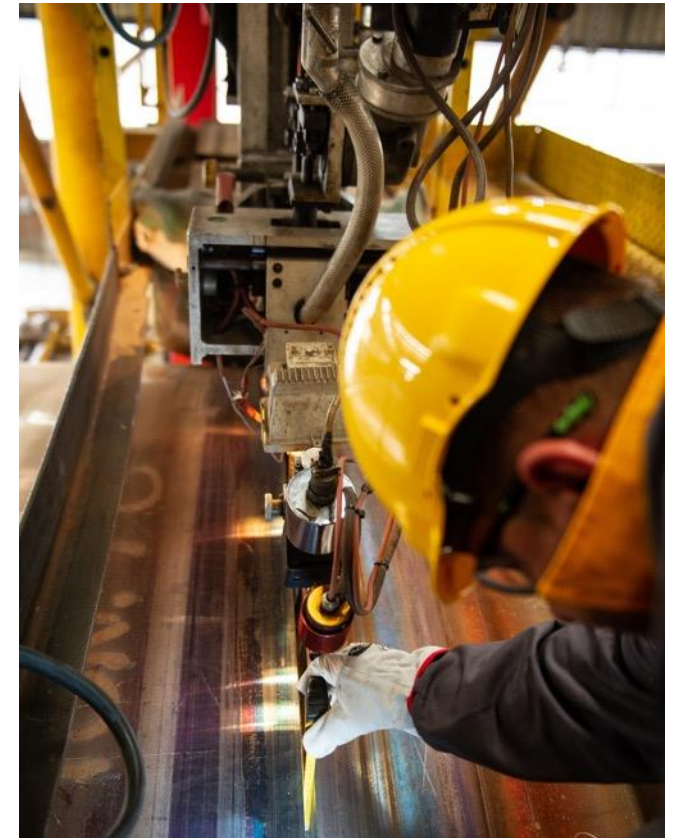
SAW TANDEM MONOWELD®
PATENTED TECHNOLOGY



MONOWELD®
SOLUTION



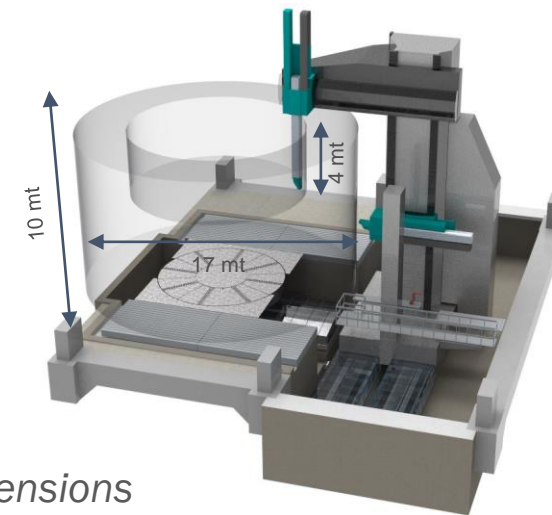
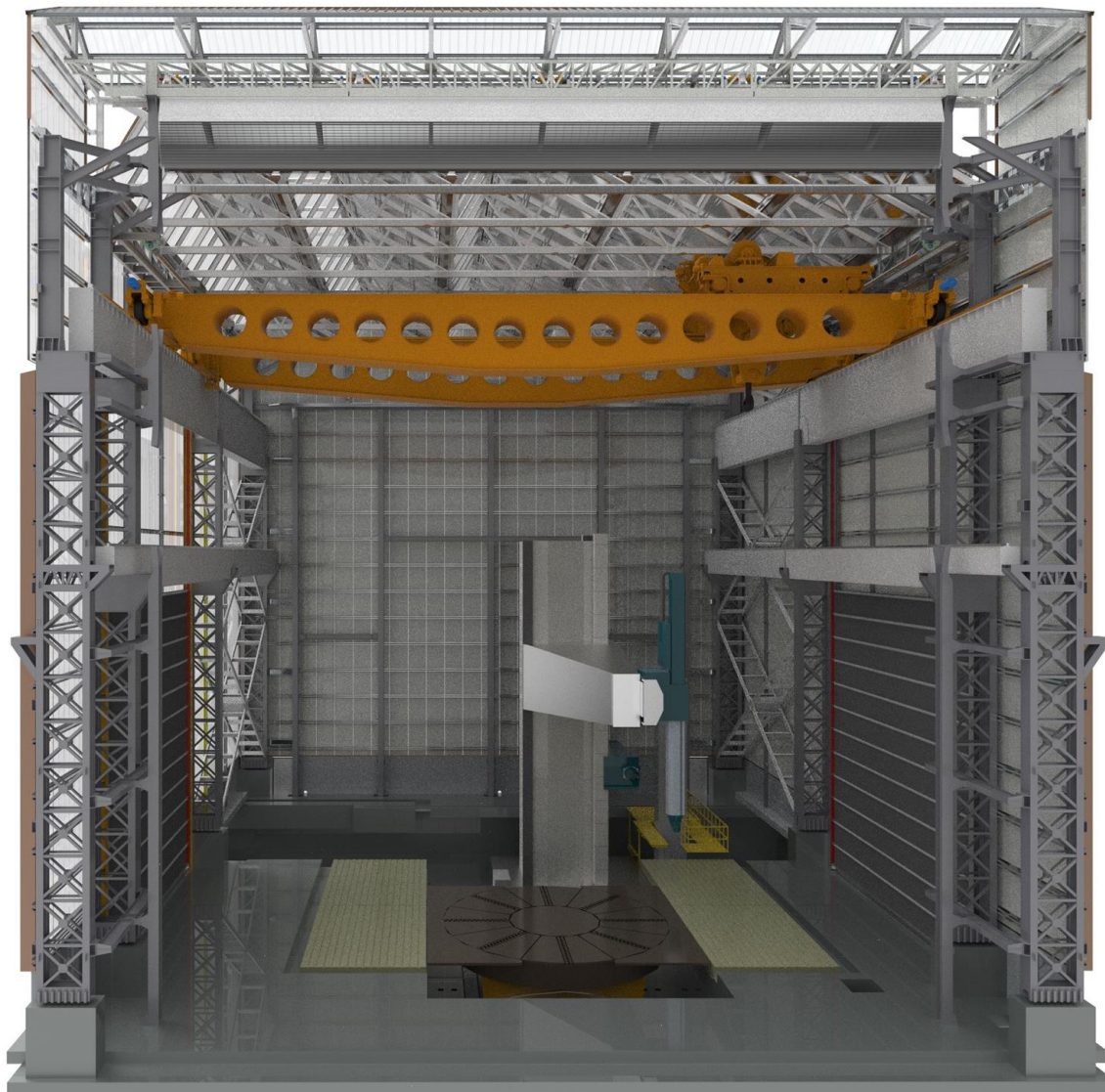
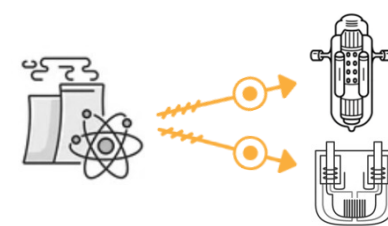
- ▶ 30% Reduction of Weld Volume
- ▶ Welding Material Saving / Time Reduction
- ▶ Gas (preheating) and Energy Saving (environment benefit)



QUALITY IMPROVEMENT AND
HIGHER DELIVERY RELIABILITY

LARGE MACHINING

Achieving Precision at a Grand Magnitude



Axis travel/dimensions

- Column height: 15.8m
- X axis stroke: 13.5m
- Vertical stroke (Z3+Z1): 9m + 4m

Horizontal ram

- Horizontal stroke (Y2): 4m
- Vertical stroke (Z2): 9m

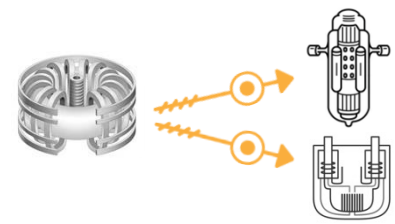
Sliding Ø8m rotary table, Load capacity 400 t

Turning-table “chair” sliding stroke (V axis): 4.5m

Machinable maximum diameter: Ø17m

LASER & ADVANCE ENGINEERING

Synergizing Design and Production for Industry 4.0



Laser Trackers



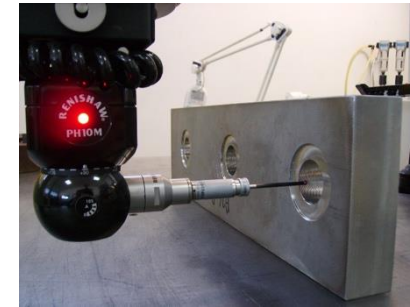
T-Probe for Laser Tracker



T-Scan for Laser Tracker



Anthropomorphic Arm



CMM

3D CAD

CAM

Metrology

Dimensional Scanning

3D Simulation

Welding Distortion Analysis

Deformation Analysis

Reverse Engineering

Metrology

...

Welding School

Since 2006, the company carries out a professional training course for welders, divided between practical training (200 hours) and theoretical lessons (20 hours). At least 50% of the participants are subsequently included in the company's staff.



Master course in “Pressure Process Equipment: Design & Manufacturing”



Established in collaboration with the University of L'Aquila and the Italian Welding Institute (IIS), the course was completed by a carefully selected number of students that are now members of staff.



Industry 4.0 training program

A recognized course on design and manufacture of critical systems for the Energy sector established in 2018 in collaboration with the “Higher Technical Institute Energy Efficiency – L'Aquila” foundation.



Collaboration with the Professional and Technical Colleges

- + Customised Mechanical, Mechatronics and Energy specialisation course
- + Professional Qualification as Pressure Equipment Operator



Technical School

A technical school is under construction in proximity of the company facilities and will be donated to the public administration. Equipped with modern laboratories, it aims to bridge the gap between the technological skills required by the industry and those provided at school.



walter tosto

INNOVATION AND DELIVERY

